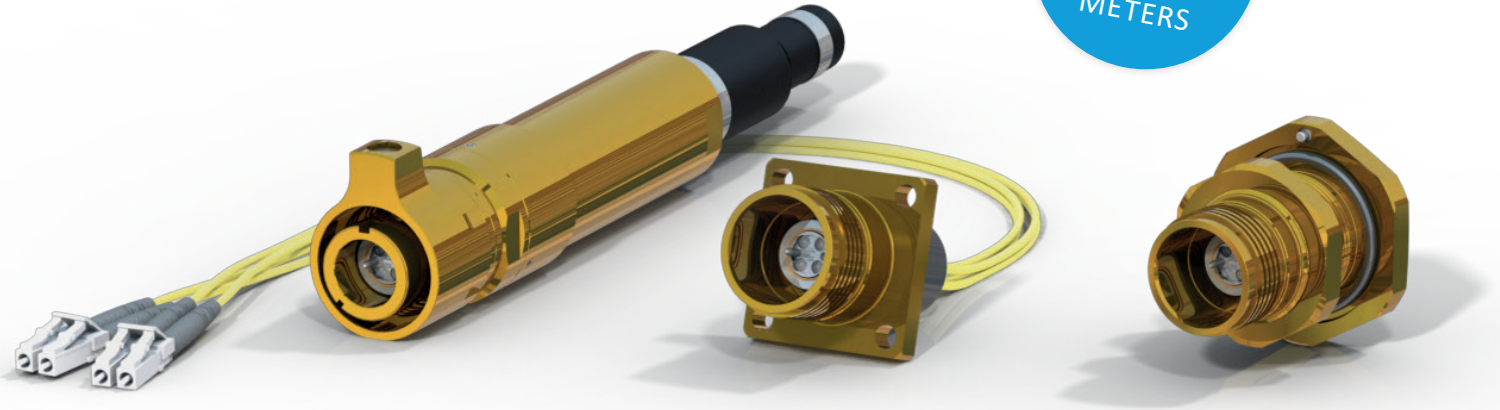


SUBSEA CONNECTORS & FIBER OPTIC CONNECTORS

SERIES 8811FO EXPANDED BEAM

FOR UNDER WATER AND
HARSH ENVIRONMENT APPLICATIONS

THE SERIES 8811FO COMBINES THE BENEFITS OF THE RUGGEDIZED CONNECTOR SERIES 8811 AND THE EASY TO CLEAN ADVANTAGES OF AN EXPANDED BEAM FIBER OPTIC INSERT IN A MOST COMPACT AND RUGGEDIZED HOUSING. OUR CONNECTOR IS VERY RESISTANT TO SHOCK AND ENVIRONMENTAL ISSUES. BECAUSE THE FIBER SYSTEM IS A NON-CONTACT, THE LIFE OF THE EXPANDED BEAM INSERT EXCESS OF 3000 MATING CYCLES.



WATERTIGHT
DOWN TO
1.000
METERS

EXAMPLES OF APPLICATIONS

- > DIFFERENT HEAVY DUTY INDUSTRIAL APPLICATIONS
- > OFFSHORE APPLICATIONS
- > R.O.V.
- > SHIPS, ON DECK APPLICATIONS
- > MARINE COMMUNICATION SYSTEMS
- > UNDERWATER COMMUNICATION SYSTEMS
- > APPLICATIONS IN THE OIL INDUSTRY
- > SUBMARINES

ENVIRONMENT

OPERATING TEMPERATURE:	AMBIENT -30°C TO +70°C SUBSEA -4°C TO +40°C
OPERATING PRESSURE:	10 MPA (100 BAR)
TEST PRESSURE:	15 MPA (150 BAR)

SPECIFICATIONS

INSERTION LOSS:	
SINGLEMODE:	0.75 - 1.5DB, TYPICAL
MULTIMODE:	0.75 - 1.0DB, TYPICAL

RETURN LOSS:
> 34DB @ 1310NM OR 1550NM



JOWO - SYSTEMTECHNIK GMBH // LANGE WAND 12 // 27753 DELMENHORST // GERMANY
EMAIL: INFO@JOWOSY.DE / WEB: WWW.JOWOSY.DE



START CONTACT
+49 4221 916 495-30

JUST TAKE YOUR SMART
PHONE CAMERA

SUBSEA CONNECTORS & FIBER OPTIC CONNECTORS

SERIES 8811FO EXPANDED BEAM

FOR UNDER WATER AND
HARSH ENVIRONMENT APPLICATIONS

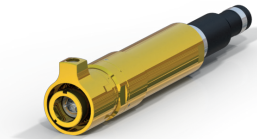
CLASSES AND SHELL MATERIALS

THE SERIES 8811 EXPANDED BEAM IS AVAILABLE IN MARINEBRONZE.
FOR OTHER MATERIALS CONSULT US.

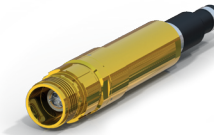
MATERIALS

SHELL:	NICKEL ALUMINUM BRONZE CW307G
INSULATOR:	ARCAPAP1D
O-RINGS:	NBR
RUBBER BOOT:	NBR

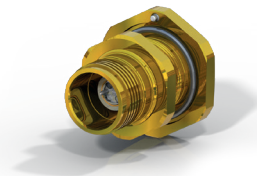
CONNECTORS



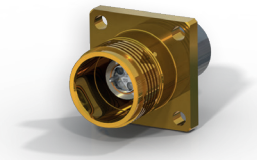
PLUG
WITH BACKSHELL



INLINE RECEPTACLE
WITH BACKSHELL



JAM-NUT RECEPTACLE



SQUARE FLANGE RECEPTACLE



CERTIFIED

CERTIFIED
EN 9120
ISO 9001

