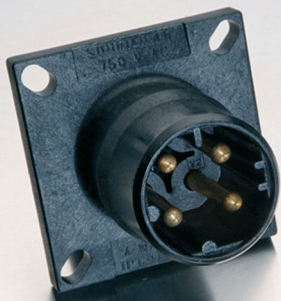


SERIES 8819

Push pull connector for rough environments



Watertight up to 300 m water depth



SYSTEMTECHNIK GmbH
Marine - Oceano products - Military

SERIES 8819

Push pull connector for rough environments



Series 8819

The outstanding characteristic of the series 8819 is the pressure density also in unmated condition up to 300 m water depth. The combination of the rigid plastic and flexible elastomere materials guarantees a long term function in rough environments.

The series 8819 is easily assembled as no special tools or potting compounds are required to seal the connector. They are available with the standard contact design of 4 or 7 contacts.

Classes and shell materials

The series 8819 consists of different materials. The essential part of the insulator is GFK, the backshells are available in EPDM or NBR. This connector series can be submerged up to 300 m water depth mated and unmated.

Layouts Shellsize	Contacts AWG 8	Contacts AWG 12
1		
Number of contacts	4	7
I max. connector	4 x 32 A	7 x 13 A
I max. contact	43 A	23 A
U max.	750 V~	750 V~
P max.	30 bar	30 bar
Ø cable	9,5 – 20,5 mm	9,5 – 20,5 mm
Conductor	1,5 - 6 mm ²	1,5 - 4 mm ²

Examples of applications

- water treatment plants
- tunneling lighting and signal systems
- life boats
- offshore equipment
- ships and other water vehicles
- buoys and floating lights
- utility vehicles
- industrial applications
- railway technology

Standard designs and references

Plug

with socket contacts



4 – pole: Type 8819-1-06-3-04WR...
7 – pole: Type 8819-1-06-3-07WR...
in addition 1 pc. pilot contact*
4 – pole: Type 8819-1-16-3-04WR...
7 – pole: Type 8819-1-16-3-07WR...

Inline receptacle

with pin contacts



4 – pole: Type 8819-1-01-3-04WR...
7 – pole: Type 8819-1-01-3-07WR...

Squareflange receptacle

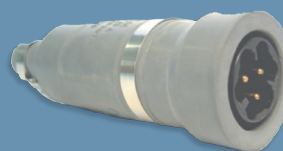
with pin contacts



4 – pole: Type 8819-2-00-3-04WS
7 – pole: Type 8819-2-00-3-07WS

Plug

with pin contacts



7 – pole:
Type 8819-1-02-3-07WR...

Squareflange receptacle

with socket contacts



7 – pole: Type 8819-2-08-3-07WS
in addition 1 pc. pilot contact*
7 – pole: Type 8819-2-18-3-07WS

*: Pilot-contact = longer version of socket contact for additional protection.
The dimensions of outer cable diameter are shown at the end of the reference.

References Backshell	Cable Ø
...WR12S	09,50 - 12,00 mm
...WR22S	11,50 - 14,50 mm
...WR32S	14,00 - 17,25 mm
...WR42S	16,00 - 20,50 mm

If you would like more detailed information
– the Team at JOWO – Systemtechnik GmbH – will be delighted to help.

JOWO - Systemtechnik GmbH
Lange Wand 12

D - 27753 Delmenhorst

phone +49 (0) 42 21 - 916 495-0
fax +49 (0) 42 21 - 916 495-59
mail info@jowosy.de
web www.jowosy.de

